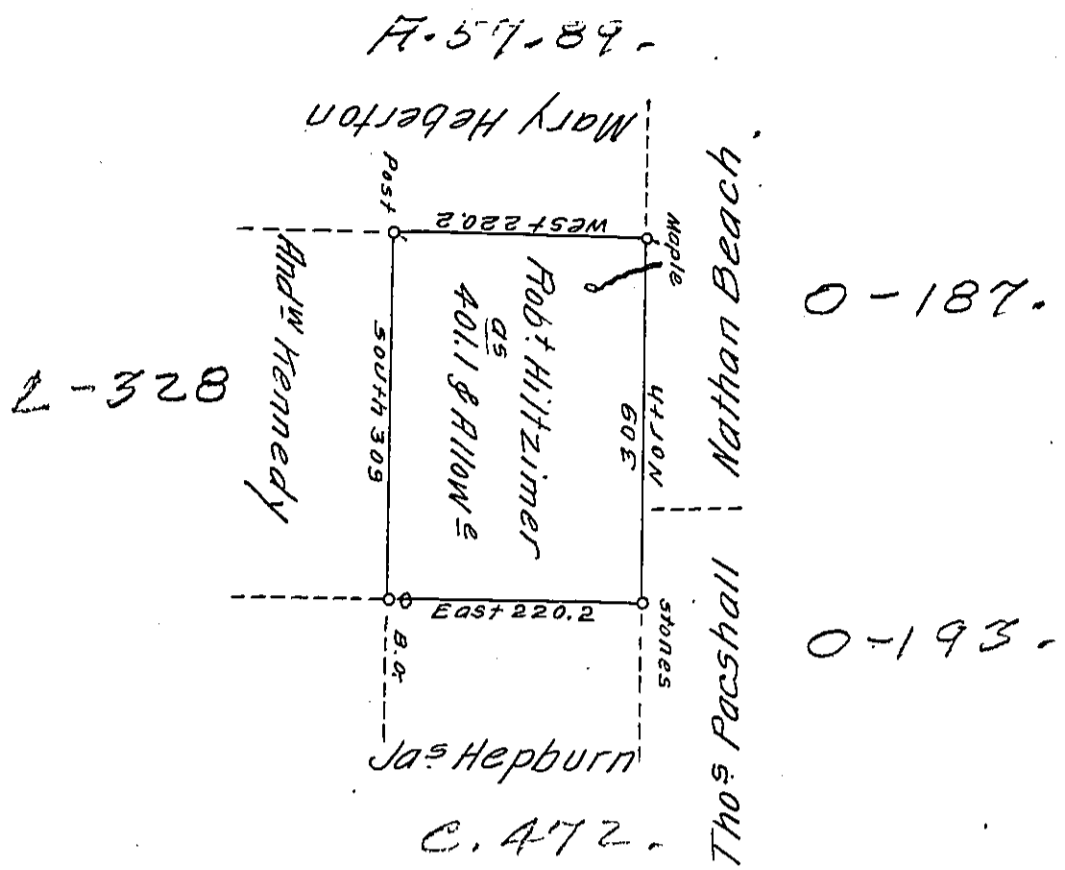


Foster -  
Luzerne.



A Draft of a tract of land Called— Situate Adjoining land Surv<sup>d</sup>  
 for for And<sup>w</sup> Kennedy & others in the County of Northum<sup>d</sup>. Con-  
 taining four Hundred & one Acres and one tenth and Allow<sup>e</sup>.  
 Surveyed for Robt Hiltzimer the 6<sup>th</sup> day of Sep<sup>r</sup> 1793. by Virtue  
 of a Warr<sup>t</sup> Dated 13<sup>th</sup> day of June 1793.

To Daniel Brodhead Esq<sup>r</sup> } by W<sup>m</sup> Gray D.S.  
 Surv<sup>r</sup> Gen<sup>l</sup> }

IN TESTIMONY that the above is a copy of the original remaining on file in  
 the Department of Internal Affairs of Pennsylvania, made  
 conformably to an Act of Assembly approved the 16th day of  
 February, 1833, I have hereunto set my Hand and caused  
 the Seal of said Department to be affixed at Harrisburg,  
 this fifth day of April 1911.

*Henry Houch*  
 Secretary of Internal Affairs.